



*SANITARY PROCESS EQUIPMENT FOR RELIABLE AND SAFE PRODUCTION*



**SANITARY  
SOLUTIONS**





# PUMPS

## AMPCO AC/AC+ CENTRIFUGAL PUMPS



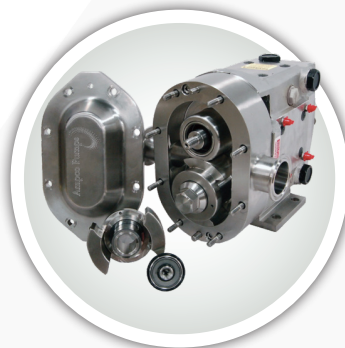
- Flows up to 1,100 GPM
- Pressures up to 60 psi
- Viscosities up to 1,200 cPs
- 316L stainless steel construction
- 4 seal options available
- 3-A Sanitary Standard 18-03

## AMPCO TWIN SCREW PUMPS



- Flows up to 1,321 GPM
- Pressures up to 362 psi
- Viscosities up to 1,000,000 cPs
- Speeds up to 3,000 RPM
- Max port sizes up to 6"
- Max partricle sizes up to 2.3"

## AMPCO ZP CIRCUMFERENTIAL PISTON PUMPS



- Flows up to 310 GPM
- Pressures up to 500 psi
- Viscosities up to 1,000,000 cPs
- ZP1, ZP1+, ZP2 & ZP3 Series
- 3-A Sanitary Standard 18-03 and EHEDG Certified

## BJM SUBMERSIBLE PUMPS



- Flows up to 911 GPM
- Sizes available from 2" to 6"
- Motor ratings from 1 HP to 20 HP
- 316 cast stainless steel construction
- Shredder action non-clog impellers
- FKM elastomers

## BUSCH R5 VACUUM PUMPS



- Oil-lubricated rotary vane vacuum pumps for food packaging and other tough industrial applications
- Ultimate Pressure: 0.05 - 20 hPa (mbar)
- Nominal Pumping Speed 60 Hz: 4.8 - 1,800 m<sup>3</sup>/h

## FLUX DRUM PUMPS



- For 55 gallon drums, totes & IBC's
- Flows up to 12 GPM
- Pressures up to 116 psig
- Viscosities up to 100,000 cPs
- Electric and pneumatic motors
- ATEX, FDA, & 3-A Certified

## GOULDS CENTRIFUGAL PUMPS



- Flows up to 175 GPM
- Up to 150 ft head
- Pressures up to 125 psi
- 316L stainless steel construction
- High efficiency enclosed impeller
- John Crane mechanical seal design

## GRACO SANIFORCE PISTON PUMPS



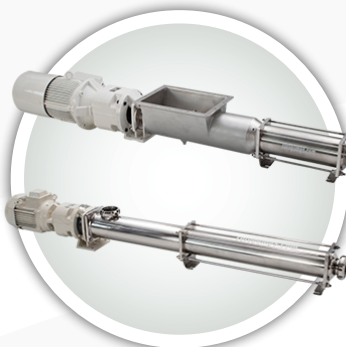
- Flows up to 14 GPM
- Fluid pressures up to 1,200 psi
- Viscosities up to 100,000 cPs
- Drum, bin and stubby pump lengths
- SaniForce 2:1, SaniForce 6:1, SaniForce 5:1 & SaniForce 12:1

## MOUVEX ECCENTRIC DISC PUMPS



- Flows up to 286 GPM
- Pressures up to 232 psi
- Temperatures up to +212°F
- Clean-in-place (CIP) and Sterilize-in-place (SIP)
- 3-A, EHEDG & FDA Certified

## ROTO PROGRESSIVE CAVITY PUMPS



- Flows up to 380 GPM
- Pressures up to 348 psi
- IDE, SMS & RJT connections
- Hygienic quality gland packing or mechanical seal options
- Smooth finish stainless steel

## THOMAS HIGH PRESSURE PUMPS



- Flows up to 400 GPM
- Pressures up to 2,300 psi
- Pump speeds up to 4,380 RPM
- Options include T-GTO, T-GTO XD & T-GEAR Series
- Made in the USA

## WILDEN DIAPHRAGM PUMPS



- Flows up to 231 GPM
- Pressures up to 250 psi
- Sizes available from 1/4" to 3"
- ADS options: Pro-Flo, Pro-Flo Shift
- Complies with FDA, USP VI, 3A, CE, ATEX and EHEDG standards

# PROCESS EQUIPMENT & HOSE

## AMPCO INLINE MIXERS & BLENDERS



- DRY-blend, SHEAR-blend, POWDER-max, SBH blenders and SBI pumps
- Flows up to 510 GPM
- Powder feed rates up to 350#/min
- Viscosities up to 2,500 cPs

## SHARPE PORTABLE MIXERS



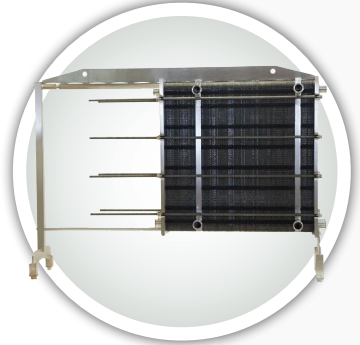
- Tank sizes up to 5,000 gallons
- Viscosities up to 15,000 cPs
- Clamp, plate or flange mounted
- Direct drive, gear drive, thrifty and USDA approved stainless steel models available

## SHELCO MICROVANTAGE HOUSINGS



- MicroVantage HPI/HPV Series
- MicroVantage Sanitary SFH Series
- Equipped with 222, 226 or DOE style cartridge connectors
- 316L stainless steel construction
- Replacement cartridge filters

## THERMALINE GASKETED PLATE HEAT EXCHANGERS



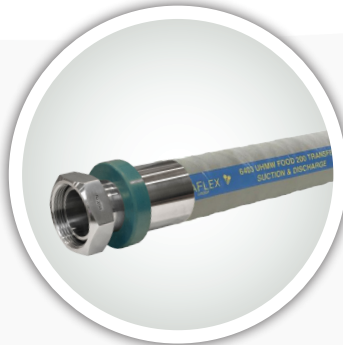
- Deep channels for gentle processing of food products and cleanliness
- Complies with 3-A requirements
- Automated open/closed designs
- 3-A shell & tube heat exchangers also available

## TUDERTECHNICA GLIDETECH BUTYL HOSE



- Premium grade low permeation flexible suction and delivery hose for wine and spirits
- Extra flexible corrugated cover
- Good for CIP (clean-in-place)
- 3-A Sanitary Standard 18-03

## NOVAFLEX UHMW FOOD SUCTION & DISCHARGE HOSE



- Recommended for special applications that require smooth tubes and easy to clean surfaces
- 3/4" to 4" I.D. options
- Consistent 200 psi rating
- FDA odor and tasteless tube

## CONTINENTAL VINTNER RESERVE HOSE



- Used for transferring wine, beer, potable water and more
- Consistent 250 psi rating
- White chlorobutyl tube
- Conforms to FDA, USDA and 3-A Sanitary Standard 18-03

## CONTINENTAL WASHDOWN HOSE



- Used in food processing plants, dairies and breweries
- Microban product protection cover
- Blue Fortress 300
- Super Sani-Wash 300
- Yellow Fortress 300

## ACCESSORIES & SANITARY EQUIPMENT



## ATTACHMENT METHODS



## WASHDOWN ACCESSORIES





# Our Sanitary LINE CARD

## Pump Manufacturers



## Hose & Fittings



## Filtration



## Process



## Custom Sanitary Solutions ENGINEERING, DESIGN & BUILD SERVICES



Need a custom skid or sanitary system? Our experienced Engineering team will guide you through the process and offer solutions guaranteed to meet your needs.

*\*Not all products available in all locations\**

**Wisconsin Corporate**  
21365 Gateway Court  
Brookfield, WI 53045  
(262) 784-3340

**Illinois Branch**  
960 Oak Creek Drive  
Lombard, IL 60148  
(630) 782-6834

**Indiana Branch**  
8104 Woodland Drive  
Indianapolis, IN 46278  
(317) 875-6900

**Michigan Branch**  
41304 Concept Drive  
Plymouth, MI 48170  
(248) 476-7782

**AndersonProcess.com • Sales@AndersonProcess.com**

Serving Illinois, Indiana, Iowa, Kentucky, Michigan, Ohio and Wisconsin